

Characteristics



HEPA -
Included



High Filtration
Efficiency Unit



Wet and Dry
Recovery



- HEPA filter with an efficiency of 99.995% at 0.3 micron. Tested IEST-RP-CC001. H14 by MPPS method as per EN 1822 and OSHA compliant. All of our HEPA vacuum systems are aerosol leak tested before leaving our facility - included
- For general housekeeping
- Dual bypass/dual speed heavy duty motors. 2000W (2400 max.)
- Middle ring for poly liner recovery bag. For the recovery of wet/saturated asbestos
- For wet & dry recovery
- Polyethylene recovery tank
- Silent operation
- Mounted on a Tilting Cart (TC) for easy disposal of recovered materials

Specifications

4D-16 (TC) RE HEPA MR (ASBESTOS)	110569B
Model Name	4D-16 (TC) RE HEPA MR (ASBESTOS)
Type (Powerhead)	Electric - Dual Motor
Tension	230 V
Frequency	50 Hz
Phase	Single
Wattage	2100 W
Power	2.1 kW
Amperage	10 A
Air Flow	336 m ³ /h
Vacuum Pressure	2110 mm H ₂ O
Type of Power Outlet	Not Included
Suction Inlet Port	50 mm
Cart Type	Tilt Cart (TC)
Filter Cleaning	None
Dust Recovery Tank	56.8 L
Liquid Recovery Capacity	57 L
Length	69 cm
Width	69 cm
Height	117 cm
Weight (Vacuum Only)	46 kg.
Cord Length	10.6 m

Please note that specifications are subject to change without notice

Use only recommended tools & accessories



HEPA Filter - Included



Main Cloth Filter - Included



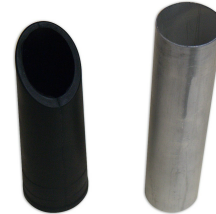
Dralon Pre-Filter & Liquid Filter - Included



Asbestos Polyliner (6) W retaining clip (not shown) - Included



PVC Crushproof Suction Hose Assembly - Included



Conical Nozzle and Adaptor - Included