

Characteristics



HEPA -
Included



High Filtration
Efficiency Unit



Wet and Dry
Recovery



- HEPA filter with an efficiency of 99.995% at 0.3 micron. Tested IEST-RP-CC001. H14 by MPPS method as per EN 1822 and OSHA compliant. All of our HEPA vacuum systems are aerosol leak tested before leaving our facility - included
- For general housekeeping
- Heavy duty 2-stage by-pass motor
- For wet & dry recovery
- Polyethylene recovery tank
- Silent operation
- Mounted on a Tilting Cart (TC) for easy disposal of recovered materials

Specifications

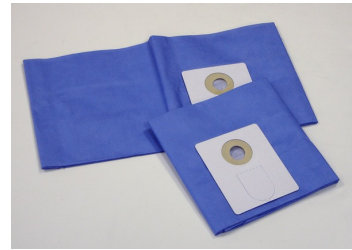
2D-15 (TC) RE HEPA	110566B	110566C	110566D	110566E
Model Name	2D-15 (F) (TC) RE HEPA	2D-15 (F) (TC) RE HEPA	2D-15 (F) (TC) RE HEPA	2D-15 (F) (TC) RE HEPA
Type (Powerhead)	Electric	Electric	Electric	Electric
Tension	240 V	240 V	240 V	240 V
Frequency	50 Hz	50 Hz	50 Hz	50 Hz
Phase	Single	Single	Single	Single
Wattage	1050 W	1050 W	1050 W	1050 W
Power	1 kW	1.1 kW	1.1 kW	1.1 kW
Amperage	5 A	5 A	5 A	5 A
Air Flow	189 m ³ /h	173 m ³ /h	173 m ³ /h	173 m ³ /h
Vacuum Pressure	2180 mm H ₂ O	2110 mm H ₂ O	2110 mm H ₂ O	2110 mm H ₂ O
Sound Level	69 dB(A)	69 dB(A)	69 dB(A)	69 dB(A)
Type of Power Outlet	European	UK	Swiss	Chinese
Suction Inlet Port	38 mm	38 mm	38 mm	38 mm
Cart Type	Tilt Cart (TC)	Tilt Cart (TC)	Tilt Cart (TC)	Tilt Cart (TC)
Filter Cleaning	None	None	None	None
Dust Recovery Tank	47.3 L	47.3 L	47.3 L	47.3 L
Dry Recovery - Disposable Filter Bag	19 L	19 L	19 L	19 L
Liquid Recovery Capacity	47.3 L	47.3 L	47.3 L	47.3 L
Length	76 cm	76 cm	76 cm	76 cm
Width	71 cm	71 cm	71 cm	71 cm
Height	97 cm	97 cm	97 cm	97 cm
Weight (Vacuum Only)	35 kg.	35 kg.	35 kg.	35 kg.
Cord Length	10.6 m	10.6 m	10.6 m	10.6 m

Please note that specifications are subject to change without notice

Use only recommended tools & accessories



HEPA Filter - Included



Disposable Filter Bag - Included



Clear Polyliner Recovery Bags - Included



PVC Crushproof Suction Hose Assembly - Included



Tools and Accessories (Toolkit 4B) - Optional